

EAST 66TH STREET IMPLEMENTATION PLAN

PROJECT UPDATE – 05.20.20

MidTown Cleveland
Northeast Ohio Areawide Coordinating Agency
City of Cleveland
Twelve Literary Arts
Lattimore Productions
City Architecture

WELCOME
&
CHECK-IN



EAST 66TH STREET IMPLEMENTATION PLAN

COMMUNITY ENGAGEMENT

“And they took a lot of our benches and tables that we had around the parks or near the parks, so there is nowhere to sit or be comfortable in our neighborhoods. And why are our street lights so dim? A lot of the streetlights are never changed or they don’t work, so you’re just walking down a dark street. We need our community to look the right way. When you come outside you need to feel like you can come out and walk. (Hough Community Member, 2020).

Activities

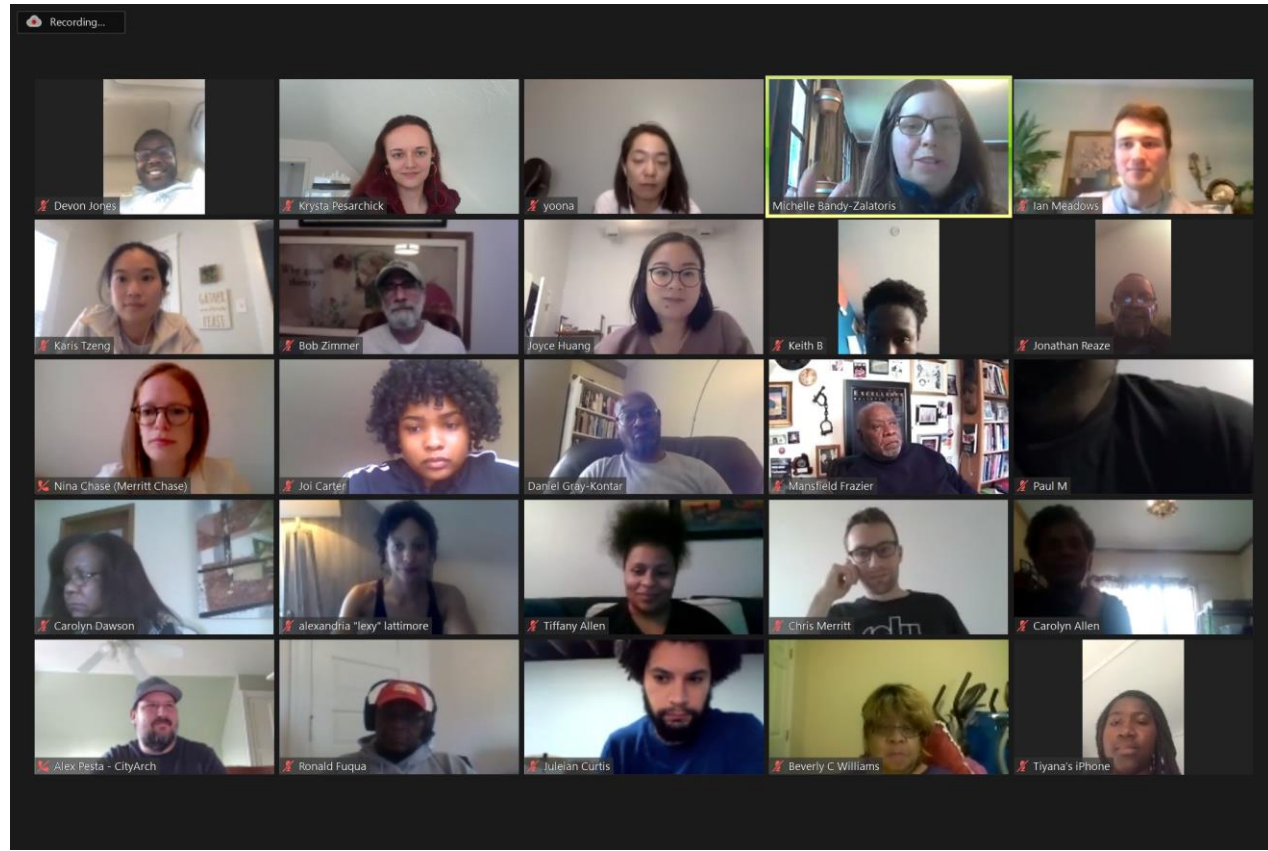
- Resident conversations, interviews and surveys
- Community outreach activities with seniors, youth and children (5)
- Stakeholder meetings (4)
- Virtual community meetings (2)

Narrative Consistency Across both Youth Focus Groups

- A street that attracts youth and families
- A street that unifies all of Hough
- A street that feels like “Black Avenue”
- Murals/words of affirmation and culturally-responsive images
- Tables and benches
- Outdoor workout equipment, basketball courts, and open green spaces for play
- Mounted barbecue pits
- Walkable, with a section with no car entry
- Bicycle trails
- The return of a Recreation Center
- Street well-lit

EAST 66TH STREET IMPLEMENTATION PLAN

COMMUNITY MEETING #1



A MEET-UP TO DISCUSS
REDESIGNING E. 66TH STREET **NEW Date & ID**
Friday, May 8
5:30-7:30PM

VIRTUAL BLOCK PARTY

Zoom ID: 818 3751 1514
Password: E66Street2
Dial in: 929-205-6099
Web: <http://tiny.cc/e66-blockparty>

An update to the 2012 League Park TLCI Plan
Northeast Ohio Areawide Coordinating Agency
Public Meeting Vol. 1

**WE HAVE A DREAM
FOR HOUGH!**

EAST 66TH STREET IMPLEMENTATION PLAN

ARTS DISTRICT DISCUSSION



PARTNER PROJECT UPDATES



EAST 66TH STREET IMPLEMENTATION PLAN

CITY PROJECT REVIEW

1-May-20

Project: East 66th St TLCI, Euclid to Superior

Submittal: Project Update 04-15-20

REVIEWER	Comment	DOCUMENT (Identify drawing no., report, calculation, spec. section, etc)	REVIEWER COMMENT (state action required by Design Team, i.e., clarify, change, add, delete, etc.)	DESIGN TEAM RESPONSE (Give brief description of compliance or justify reservation/disagreement) A - Agree; B - Agree & Comment; C - Disagree; D- Resolution Required
Traffic Engineering	1	All Concepts	The corridor is being treated like a street with heavy volumes. Does the consulting team have a traffic study for us to review? If the ADTs are as low as I would expect them to be, this street could be a much better candidate for a bicycle boulevard than one with shared use paths or separated bike lanes (SBLs). We'd need to take a very close look at access point density and type to see if this corridor is even a candidate for SBLs. The in-street multipurpose path alternatives shown in the attachment really are SBLs, but they don't provide ways to protect cyclists from conflicting traffic due to horribly restricted sight lines.	
Traffic Engineering	2	All Concepts	The consulting team should have a decision matrix / memo for us to review. It would list all factors considered when the alternatives were developed; and it would provide an explanation of why certain options are favored so far. We (TE) need to review it and determine which options can proceed to the next stage of review. It's likely we'd need to modify and/or add to the list of possible alternatives so they fit the traffic and land use characteristics of this corridor	
E&C Design	3	GENERAL	Explain the intent of including a multi-purpose trail along a low-speed, low-traffic volume street. Is it recommended for user safety? Where does it begin and end? What is the origin and destination of the intended users? Are project stakeholders willing to assume maintenance?	
E&C Design	4	GENERAL	All concepts that require relocation of existing curb lines should include provisions for drainage and utility relocations, at a minimum. Is there room for proposed catch basins along the new curb line? Where will relocated overhead utilities go?	
E&C Design	5	GENERAL	The 2010 TLCI study included a concept for making East 66th one-way, and pairing it with East 64th for the other direction. Is this concept still under consideration?	
E&C Design	6	GENERAL	Since the character of the street varies from Euclid to Superior, consider whether different treatments should be considered along different sections.	
E&C Design	7	GENERAL	The section from Hough to Wade Park is classified as a Major Collector on ODOT's Functional Classification system (see Attachment A). Design per L&D criteria is eligible for federal/state funding.	

Project Priorities

Redesign the street and public spaces to **give greater priority to pedestrians, bicycles and alternate modes of transportation.**

Create a new city street typology that employs technology, pavement treatments, new maintenance practices and other details that can be **premiered here and replicated city-wide.**

Improve neighborhood connections through **access to internet,** access to a variety of transportation options, and access to amenities and cultural resources that support improved quality of life.

Provide **additional safety features** – enhanced lighting, smart signals, (touch free) pedestrian-controlled crossing, cameras, decreased crossing distances, traffic calming measures.





Project Priorities

Increase universal accessibility through wider, unobstructed paths, materials that resist freeze-thaw cycles and support smoother movement, and details that support safe crossing for people of all abilities, **with a goal of exceeding ADA and other industry standards.**

Support a **focus on history and heritage through public art** that adds color and opportunities for a wide range of art media with a strong preference to showcase resident artwork and installations.

Create sections of street that can easily be closed on a temporary basis to support regular neighborhood events and activities.

Include parking to support neighborhood activities, without allowing parking to dominate the neighborhood.



Project Priorities

Provide new trees, flowers and easily maintained landscaping that **add beauty and value** to the street.

Incorporate a range of benches, trash cans, bus shelters and other street furniture, as well as flexible spaces for outdoor activities to **bring back public spaces for the community**.

Create intersection details that prioritize pedestrian movement at Chester Avenue to **bridge the neighborhood divide** that was created with Chester Avenue's construction.

Balance the street with **the same level of detail in multiple locations** and consider phasing – **build equity into the details**.

PROCESS:
CONTINUING
THE
MOMENTUM

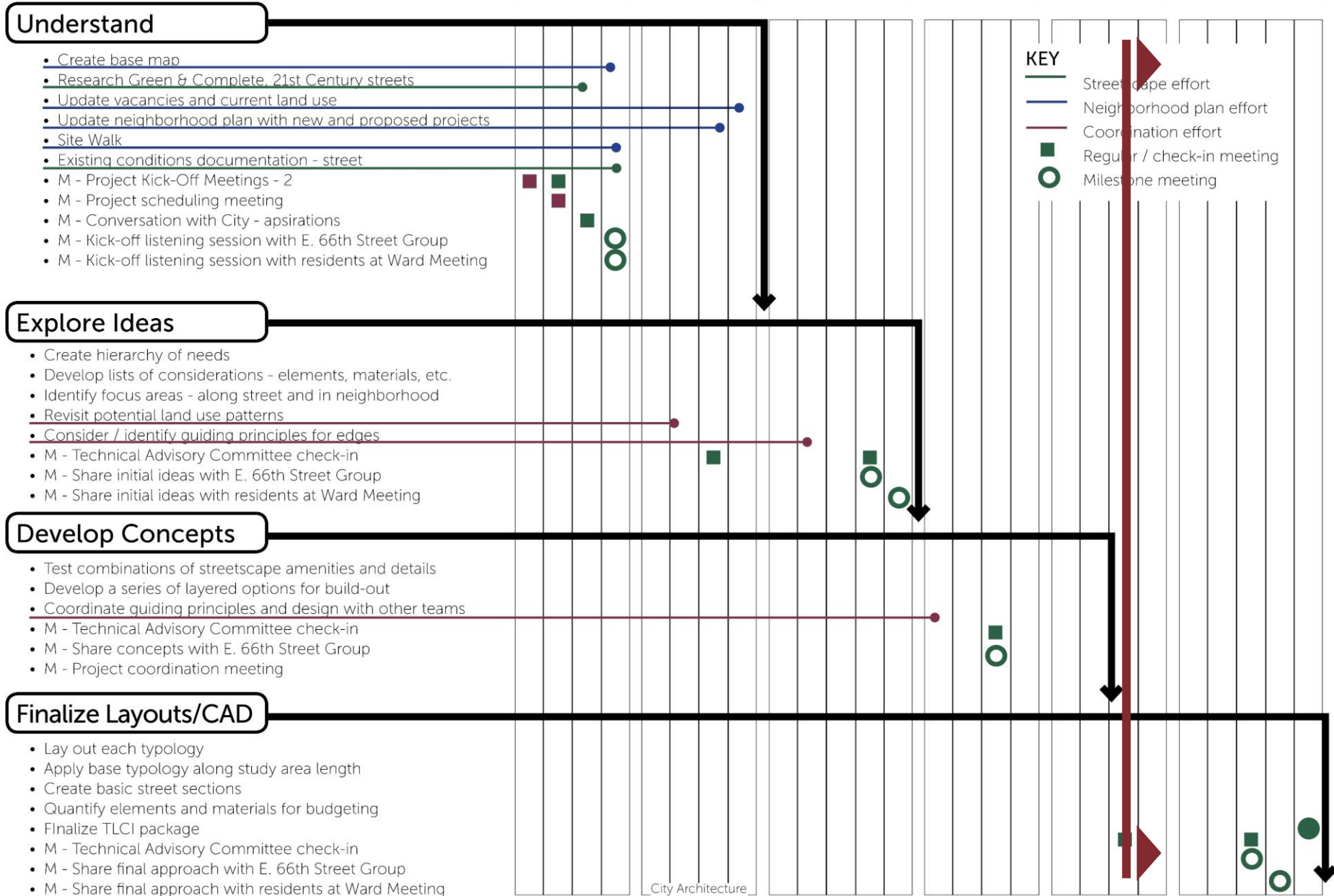


East 66th Street TLCI Update

Project Workplan

January 16, 2020

January	February	March	April	May	June
6 13 20 27	3 10 17 24	2 9 16 23 30	6 13 20 27	4 11 18 25	1 8 15 22 29



Project Approach

“Create a national model public space that emphasizes seamless connectivity and accessibility - promoting physical, social, and technological links – with an underlying commitment to justice and equity.”



PROCESS – LOOKING AHEAD

PROJECT SCHEDULE

JAN 2020 – JULY 2020

OUTREACH &
DESIGN CONCEPTS

- Connect – bring people to the table
- Understand priorities
- Participate in design process
- Identify follow-up initiatives

JULY 2020 – MAY 2022

FUNDING SUBMITTALS, FINAL DESIGN &
ENGINEERING, COMMUNITY ENGAGEMENT

- Participate in meetings and reviews
- Continue the design process
- Conduct an arts district plan
- Design the art work, build a team of local artists
- Hold community events
- Implement early concepts – begin to get things built

JUNE 2022

PHASED CONSTRUCTION OF STREETScape IMPROVEMENTS BEGINS

- Receive communications re: construction and progress
- Co-develop maintenance plans
- Community tree planting
- Determine Phase 2 elements – what’s next after the roadway construction is complete?

PROCESS – THE WHY

CONSISTENT MESSAGES ACROSS ENGAGEMENT ACTIVITIES

The need for a Salvation Army facility or similar recreation center for youth programming and activities.

A thriving environment that supports families and children with safe and healthy spaces.

A unifying street that feels like “Black Avenue” with culturally-responsive and affirming art, a welcoming environment for people from all neighborhoods and a range of black-owned businesses (shops, restaurants, neighborhood services).

Public spaces and details that encourage community interaction and events – tables, benches, grills, outdoor fitness equipment, playgrounds, parks and ways to close the street to through-traffic.

The incorporation of color, more light and greenery (trees, flowers).

Paths that support safe walking and biking through the neighborhood.

Places for art, history, performance and self-expression.

What is the role of this group moving forward?

Initiate neighborhood projects /
programs


Review neighborhood projects /
programs

Help to implement neighborhood
projects / programs

Build leadership and community
voice

Connect the community to
neighborhood initiatives

Other

A collection of white gears of various sizes scattered on a dark, textured surface. The gears are arranged in a somewhat diagonal line from the top left towards the bottom right, with some overlapping. The lighting is soft, highlighting the teeth of the gears. The background is a dark, mottled grey-blue color.

WHAT CAN
YOU BRING TO
THE PROCESS?

NEXT STEPS & CHECK- OUT



